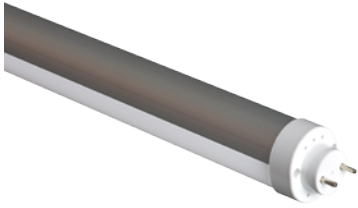


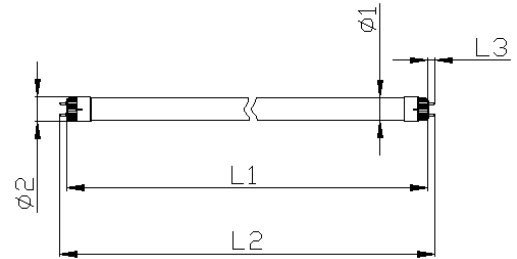
Specification features

- Excellent installation method: both direct replacement or by pass ballast available
- Compatible with magnetic, electronic ballast
- Optimum LED density and unique design combined with high quality diffusing material
- Approved for use in damp locations
- UV and IR radiation can be avoided
- Easy for installation
- Mercury-Free



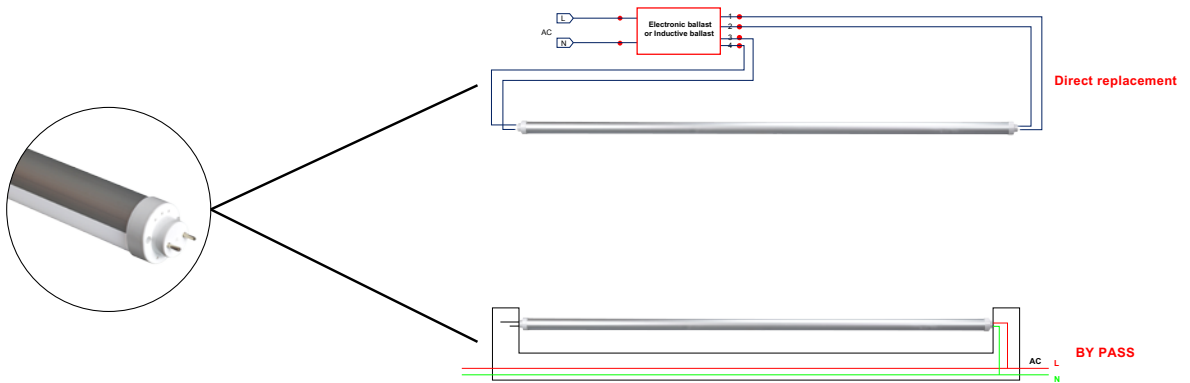
Application

- Operating temperature: -20°C~+45°C
- Not for use with dimmers



Series	Φ 1	Φ 2	L1 - max	L2 - max
iPAN-4-T8-H	25.08	36.4	1199.4	1215(4ft.)

Dimensions (Unit: mm)



Description	Operating Voltage(V)	PF	CCT	Cap	Ra	Lumen (lm)	Beam Angle	Life (hrs)
iPAN-4-T8-18W-H-830 (Direct replacement)	NA	NA	3000K	G13	≥80	2000	135	50000
iPAN-4-T8-18W-H-835 (Direct replacement)	NA	NA	3500K	G13	≥80	2000	135	50000
iPAN-4-T8-18W-H-840 (Direct replacement)	NA	NA	4000K	G13	≥80	2000	135	50000
iPAN-4-T8-18W-H-830 (BY PASS)	120-277V	≥0.9	3000K	G13	≥80	2000	135	50000
iPAN-4-T8-18W-H-835 (BY PASS)	120-277V	≥0.9	3500K	G13	≥80	2000	135	50000
iPAN-4-T8-18W-H-840 (BY PASS)	120-277V	≥0.9	4000K	G13	≥80	2000	135	50000

Version: C_V1.0

Date: 2015/05/05

iPAN LED INC.



Remarks: The contents is for reference only. Since we are continuously improving all our products, the information listed in this document are subject to change without prior notice.